



**NEW
OFFER**



PORTABLE MULTIMETERS & METERS



Contents

POWER NETWORK ANALYZERS

NP40 - Portable power quality analyzer.....3

DIGITAL MULTIMETERS

NP15 - True RMS digital multimeter.....7

NP10 - Digital multimeter.....10

INSULATION METERS

NT10 - Insulation meter.....13

CLAMP-ON METERS

NC14 - AC/DC Power clamp-on meter 1000 A / 400 A.....15

NC12 - AC/DC Clamp-on meter 1000 A / 300 A.....17

NEW



NP40 PORTABLE POWER QUALITY ANALYZER

NP40 power quality analyzer is the professional portable device to measure and analyze the power system quality, supply the harmonics analysis and power quality data analysis, also provide big memory for the data storage, which is used to make the long term logger measuring to power system. The PC software can simply upload the data to PC for full analysis.

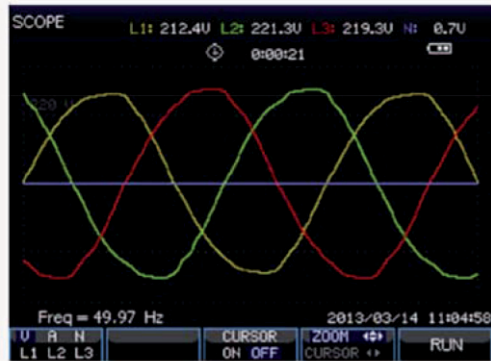


FEATURES

- 5,6" TFT color screen, 320 x 240 pixel.
- Waveform real-time display (4 voltages/4 currents).
- Half cycle RMS measurement (voltage and current).
- Measurement of TRMS currents up to 3000 A (with standard probes mode).
- Measurement in 1-phase and 3-phase systems (3 - and 4-wire).
- Measurement of voltage, current, harmonics, power, energy, inrush current, flicker and other.
- Graphical presentation of data in a waveform and vector diagram.
- Record of events: dips, swells, overvoltages.
- Power quality according to EN-50160 standard or user-defined limit.
- Internal memory for data logging needs (continuous registration from 2 hours to 7 days).
- The registration frequency from 1 second up to 60 minutes.
- Built-in 8G memory card.
- Ethernet interface for remote operation of the analyzer.
- USB Host to move archive data and screenshots to an external USB memory.
- Safety standards: EN 61010-1, CAT III 1000V / CAT IV 600V.
- The analyser set: analyzer, flexible probes mode 3000A (4x), voltage tests leads alligator clips (5x), DC power adapter, CD with software, user's manual.

NP40 - PORTABLE POWER QUALITY ANALYZER

MEASUREMENTS MODES



1 Scope

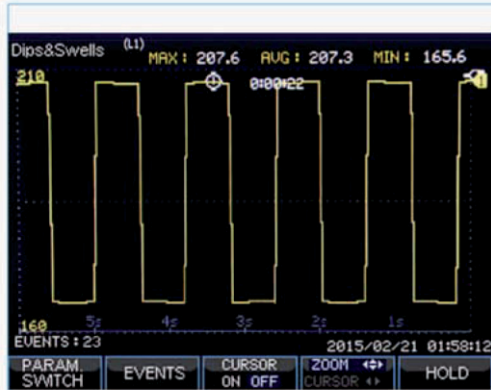
View the voltage/current waveform and readings. Cursor Zoom function.

	L1	L2	L3	N
Urms	238.7	238.7	238.7	4.842
Upk	315.2	315.2	315.2	8.518
CF	1.32	1.32	1.32	1.76
Irms	43.60	6.335	6.346	0.814
Ipk	60.33	7.630	7.901	1.113
CF	1.38	1.20	1.25	1.37

Freq = 50.00 Hz

2 Voltage/Current/Frequency

Measure voltage/current/frequency and crest factor.



3 Dips & Swells

Capture the abnormal event, such as swells, dips, interruption and rapid voltage change.



4 Harmonics

Harmonics and interharmonics measurement up to the 50th, parameter DC component, THD, K-factor.

	L1	L2	L3	Total
P(kW)	3.311	1.472	1.482	6.265
S(kVA)	10.39	1.501	1.500	13.39
Q(kVAR)	9.845	0.293	0.234	10.37
TPF	0.32	0.98	0.99	0.47
KWh	0.048	0.037	0.038	0.123
KVAh	0.262	0.038	0.038	0.338
KVARh	0.248	0.008	0.006	0.000

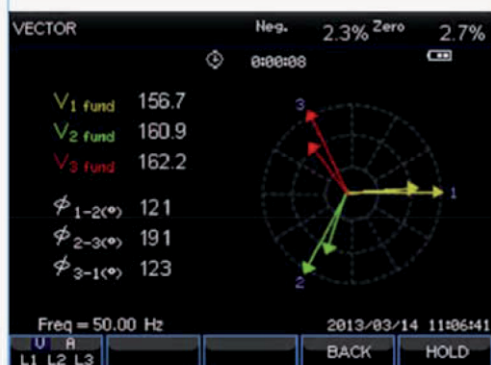
5 Power and energy

Full power parameters measurement including Vrms/Arms/KW/KVA/KVAR/TPF/DPF and energy data KWh/kVAh/kVARh.

	L1	L2	L3
Pst(1min)	0.00	0.00	0.00
Pst	0.00	0.00	0.00
Plt	0.00	0.00	0.00

6 Flicker

Support measure the parameters Pst (<10 min), Plt (<2 hrs), also Pst (1 min) for quick feedback and instant flicker pinst in trend.



7 Unbalance

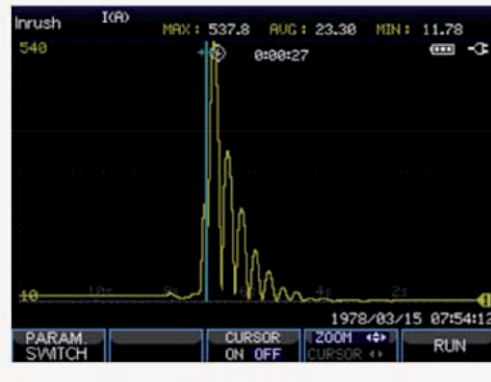
Check the unbalance in 3 phases based on EN 61000-4-30 standard.



8 Transients

Capture waveform at high-resolution during a variety of disturbances, maximum 100 events, sample rate 20Ks/s.

MEASUREMENTS MODES



9 Inrush current
Capture the surge currents that occur in a large or low-impedance load comes on line.

10 Logger
Record the measuring data as selectable parameters and interval, duration. The saved data in TF card, which can be downloaded to PC by USB and check by Power View software.



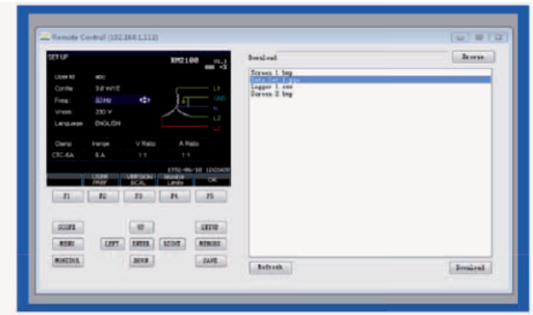
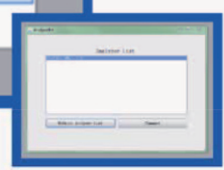
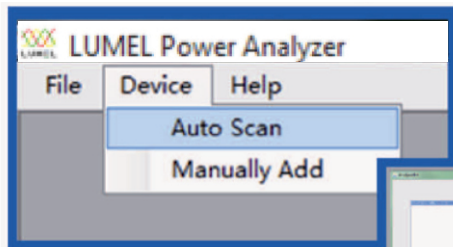
11 Monitor
Measure all the parameter Vrms, Arms, harmonics, flicker, dip, swell, rapid voltage change, interruption, unbalance, frequency at the same time, check whether meet the requirements limited by users or default standards EN50160. The monitoring time lasts from 2 hours to 7 days.

LUMEL POWER ANALYZER SOFTWARE

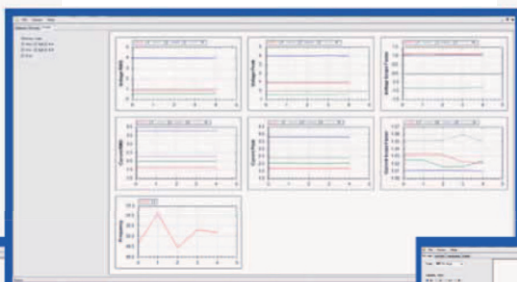
LUMEL Power Analyzer is easy operation software to make the remote control to analyzer and view the download data.

AUTO Scan the device connected to PC through LAN interface

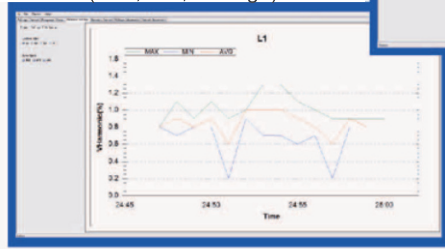
Remote control interface



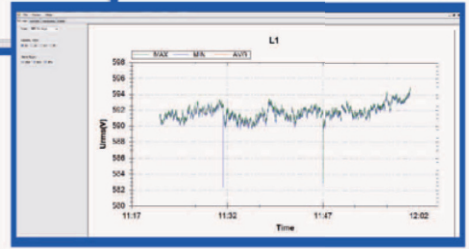
Monitor the user-demanded parameters



Visual view of data trend (max, min, average)



Visual view of data trend (max, min, average)



NP40 - PORTABLE POWER QUALITY ANALYZER

TECHNICAL DATA

► INPUTS

VOLTAGE INPUTS

Input Channels	4 (3-phase + neutral)
Max. input voltage	1000 Vrms
Range of nominal voltage	50...500V
Max pulse peak voltage	6kV
Bandwidth	>3kHz
Input impedance	4MΩ/5pF

CURRENT INPUT

Number of input	4 (3-phase+ neutral) DC coupling
Type	clamp current sensor with mV output
Input range	1...3000 Arms with supplied current clamp
Input Impedance	50 kΩ
Bandwidth	>3kHz

SAMPLING SYSTEM

Resolution	8 channels 16 bits AD
Sampling rate	20kS/s for each channel, 8 channels sample synchronously
RMS sampling	5000 points for 10/12 cycles (according to EN 61000-4-30)
PLL synchronization	4096 points for 10/12 cycles (according to EN 61000-4-7)

► MEASUREMENT

LOGGER

Recording	user-definded parameters for 4 phases at the same time
Memory	data stored in TF card, 8GB
Duration time	2 hrs to 1 year
Interval	1s to 1 hr

ORDERING CODE

Portable power quality analyzer NP40 -	XX	X	X
Version:			
standard	00		
custom-made*	XX		
Language:			
Polish		P	
English		E	
other*		X	
Acceptance tests:			
without extra requirements			0
with an extra quality inspection certificate			1
acc. to customer's request*			X

ITEMS AVAILABLE FROM OUR STOCK:
NP40 - 00E0



* after agreeing with the manufacturer

NP40-19_en

NEW



NP15 TRUE RMS DIGITAL MULTIMETER

with data logger & view function

Functions and features of the multimeter:

- ✓ Voltage measurement of AC, DC and AC / DC up to 1000V,
- ✓ Current measurement of AC, DC and AC / DC up to 10A,
- ✓ Low input impedance,
- ✓ Measurement of TRMS effective,
- ✓ Data logging & View function (up to 32000 readings),
- ✓ 100 kHz bandwidth for voltage measurement,
- ✓ Resistance measurement,
- ✓ Frequency and duty cycle measurement,
- ✓ Temperature measurement with J, K, Pt100 & Pt1000 sensors,
- ✓ Capacitance measurement,
- ✓ Automatic / manual measuring range selection,
- ✓ Low-pass filter mode with a cutoff frequency of 1kHz.

The NP15-2, NP15-3, NP15-5, NP15-6 series of new multimeters is made for professional use that offers safety, high resolution, large range count, reliability, ruggedness, a complete tool for test automation and is equipped with more than 30 different measuring functions.

FEATURES

- Voltage noise measurement and suppression (dB)
- Square wave signal generator
- Continuity test and Diode test
- Function: backlight, relative / zero, Auto Hold, min / max / avg
- Acoustic signal indicating the overrange (Go / NoGo)
- Information on dangerous voltage at the terminals
- External power supply
- Fuse 16 A for all current measurement ranges to protect the device
- Tool for automation, Plug&Play USB connectivity with PC (optional)
- Auto Power OFF with adjustable timing

NP15 - TRUE RMS DIGITAL MULTIMETER

Model Wise Functional Overview

Functions/Features	NP15-2	NP15-3	NP15-5	NP15-6
Voltage VDC (Ri>9M Ω)	•	•	•	•
Voltage VAC TRMS (Ri>9M Ω)	•	•	•	•
Voltage LoZ VAC TRMS (Ri=1M Ω)		•	•	•
Voltage VAC TRMS (Ri>9M Ω) LPF 1kHz		•	•	•
Voltage LoZ VAC TRMS (Ri=1M Ω) LPF 1kHz		•	•	•
Voltage VACDC (Ri>9M Ω)	•	•	•	•
High impedance, high bandwidth mV measurement	600mV	60mV/ 600mV	60mV/600mV	60mV/600mV
Bandwidth VAC & mV ACDC	10kHz	10kHz	10kHz	100 kHz
Frequency Measurement			•	•
Duty cycle %				
Voltage level measurement dB,dBu,dBm		•	•	•
Resistance	•	•	•	•
Conductance measurement	•	•	•	•
Continuity test (I const = 1 mA)	•	•	•	•
Diode measurement (I const = 1 mA)	•	•	•	•
Temperature measurement (TYP J,TYP K)		•	•	•
Temperature measurement (PT100,PT1000)	•		•	•
Capacitance measurement			•	•
Current ADC	600mA	6 A/16 A (20 A)	600 μ A/6 mA	600 μ A/6 mA
Current AAC+DC TRMS			60 mA/600 mA	60 mA/600 mA
Current AAC TRMS			6 A/10 A (16 A)	6 A/10 A (16 A)
Bandwidth @ AAC+DC or AAC 10 kHz	•	•	•	•
Measurement with Clamp Sensor	•	•	•	•
Data Logging / Viewing Function			•	•
Protective rubber holster	•	•	•	•
Fuse 16A / 1000V	1.6A		•	•
0-20mA / 4-20mA percentage scale			•	•
Square wave Out			•	•
Self battery voltage measurement	•	•	•	•
MIN/MAX/AVG and Auto Hold functions	•	•	•	•
Dangerous contact voltage indication	•	•	•	•
REL/Zero function	•	•	•	•
USB IR-interface			Optional	
External power supply adapter				
Measuring Category	1000 V CAT III 600 V CAT IV	1000 V CAT I 600V CAT II	1000 V CAT III 600 V CAT IV	1000 V CAT III 600 V CAT IV

Environmental Condition

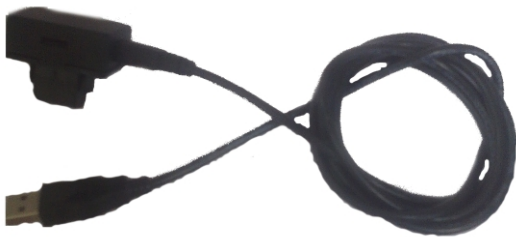
Operating temperature	-10 to +50°C
Storage temperature	- 25 to +70°C
Relative humidity	<75% non condensing.
IP	IP 50 for Housing, IP20 for terminals.
Altitude	Up to 2000 m

Applicable Regulations & Standards

EMC	EN 61000-6-2, EN 61000-6-4
Immunity	EN 61000-4-2: 8 kV atmosphere discharge, 4 kV contact discharge
	EN 61000-4-3: 3 V/m
Safety	EN 61010-1
IP for water & dust	EN 60529: IP 50 for case and IP20 for terminals
Pollution degree:	2
Installation category:	1000 V CATIII / 600 V CATIV, 600V CATII for NP15-3
High Voltage Test	7.4 kV (EN 61010-1), 3.5kV for NP15-3

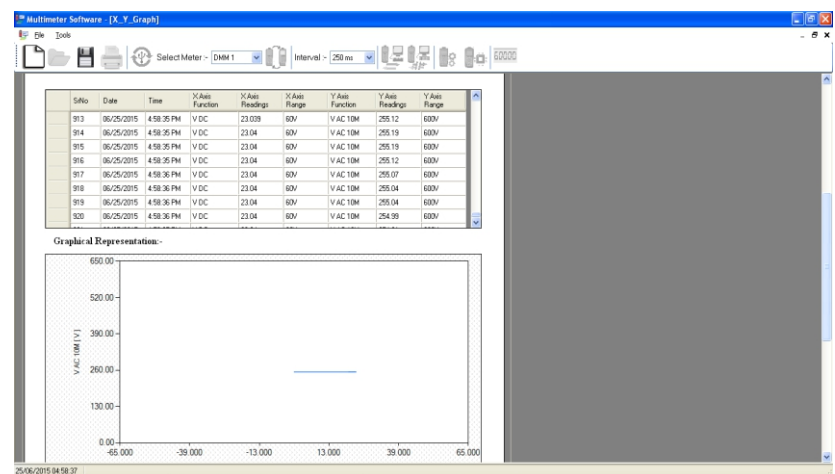
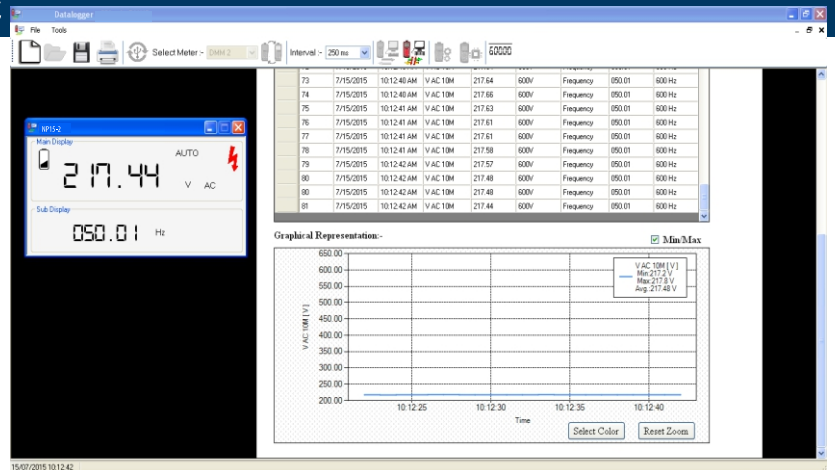
Accessories For Operation at a PC

Interface Adapter For USB Communication



Communication: Bi-Directional
 Baud Rate: 9600
 Data Bit: 8
 Stop Bit: 1
 Flow Control: None

A CD ROM is included which contains current drivers for Windows operating systems, Installation Guide and Datalogger User Manual.



ORDERING CODE

Digital multimeter NP15 -	X	XX	X	X
Type*:				
NP15-2	2			
NP15-3	3			
NP15-5	5			
NP15-6	6			
Version:				
standard		00		
custom-made**		XX		
Language:				
Polish			P	
English			E	
other**			X	
Acceptance tests:				
with an extra quality inspection certificate				1
with test certificate				2
acc. to customer's request				X

ITEMS AVAILABLE FROM OUR STOCK:

NP15 - 300E1
version: NP15-3

NP15 - 500E1
version: NP15-5

* see page 8 - Model Wise Functional Overview
 ** after agreeing with the manufacturer

NEW

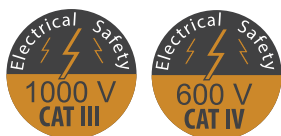


NP10 DIGITAL MULTIMETER

Functions and features of the multimeter:

- ✓ Direct and alternating voltages from 100 μ V...1000V
- ✓ Direct and alternating currents from 10 μ A...10.00A
- ✓ Resistance from 100 m Ω ...60.00 M Ω
- ✓ Capacitance from 1 pF...40.00 mF with zero correction
- ✓ Frequencies from 10.00 Hz...10MHz
- ✓ Diode measurement and continuity testing
- ✓ HOLD measurement
- ✓ Relative measurement
- ✓ Duty cycle (%) measurement
- ✓ Temperature measurement with K type Thermocouple
- ✓ Peak value measurement

Digital multimeters are suited for universal, general applications in the electrical and electronics radio and television service, training and education.



FEATURES

- Root mean square value with distorted wave form (for NP10-6 only)
- Dual display
- Peak Hold
- MIN/MAX function
- Indication of negative values on the analog scale
- Protection from dust and water acc. to EN 60529
- Applicable international safety standards
- Auto Power OFF (APO)
- Relative measurement (REL)
- Automatic blocking System (ABS)
- Auto and manual ranging modes
- Backlit
- Continuous ON mode

Specifications

Meas. Function	Measuring Range	NP-10-2	NP-10-3	NP-10-5	NP-10-6 TRIMS	Resolution	Input Impedance	Digital display Inherent deviation at reference condition +(...%rdg + ...digits)	Overload capacity ¹⁾			
									Overload Values	Overload Duration		
V(DC)	660.0mV	●	●	●	●	100μV	>100 MΩ // <40pF	0.7 + 5	1000 V DC AC eff / rms Sine wave	Cont.		
	6.600V	●	●	●	●	1mV	11 MΩ // <40pF	0.4 + 5				
	66.00V	●	●	●	●	10mV	10 MΩ // <40pF	0.4 + 5				
	660.0V	●	●	●	●	100mV	10 MΩ // <40pF	0.4 + 5				
	1000.0V	●	●	●	●	1V	10 MΩ // <40pF	0.4 + 5				
V(AC)	660.0mV	●	●	●	●	100μV	>100 MΩ // <40pF	1.2 + 5			1.0 + 3	
	6.600V	●	●	●	●	1mV	11 MΩ // <40pF					
	66.00V	●	●	●	●	10mV	10 MΩ // <40pF					
	660.0V	●	●	●	●	100mV	10 MΩ // <40pF					
	1000V	●	●	●	●	1V	10 MΩ // <40pF					
A(DC)							Voltage Drop		0.7A	Cont.		
	66.00mA	●	●	●	●	10μA	66.00mV	0.8 + 5				
	660.0mA	●	●	●	●	100μA	66.00mV	0.8 + 5				
A(AC)	10.00A		16A	●	●	10mA	10.00mV	1.5 + 5	0.7A	Cont.		
	66.0mA	●	●	●	●	10μA	66.00mV	0.8 + 5				
	660.0mA	●	●	●	●	100μA	66.00mV	0.8 + 5				
>C(AC)	10.00A		16A	●	●	10mA	10.00mV	1.5 + 5	0.7A	Cont.		
	66.00A	●				10mA	66.00mV	0.8 + 5				
Ω	660.0Ω	●	●	●	●	100mΩ	No load Voltage		1000 V DC AC eff / rms Sine wave	10Sec.		
	6.600KΩ	●	●	●	●	1Ω	-1.08V	0.8 + 5				
	66.00KΩ	●	●	●	●	10Ω	-1.08V	0.8 + 5				
	660.0KΩ	●	●	●	●	100Ω	-1.08V	0.8 + 5				
	6.600MΩ	●	●	●	●	1kΩ	-1.08V	1.0 + 5				
	66.00MΩ	●	●	●	●	10kΩ	-1.08V	2.0 + 5				
BUZZER	660.0Ω	●	●	●	●	100mΩ	-3.3V	0.8 + 5	1000 V DC AC eff / rms Sine wave	10Sec.		
F	DIODE	2.000V	●	●	●	●	1mV	3.3V			2.0 + 10	
	F	6.600nF			●	●	1pF	—			3.0+40	
		66.00nF			●	●	10pF				2.0+10	
		660.0nF			●	●	100pF				2.0+10	
		6.600μF			●	●	1nF				2.0+10	
		66.00μF			●	●	10nF				2.0+10	
		660.0μF			●	●	100nF				5.0+10	
		6.600mF			●	●	1μF				5.0+10	
40.00mF			●	●	10μF	5.0+10						
Hz	66.00Hz			●	●	0.01Hz	10 Hz(Fmin)	0.2 + 2 ²⁾				
	660.0Hz			●	●	0.1Hz						
	6.600KHz			●	●	1Hz						
	66.00KHz			●	●	10Hz	—					
	660.0KHz			●	●	100Hz						
	6.600MHz			●	●	1KHz						
	10.00MHz			●	●	10KHz						
%	1.0...98.90%			●	●	0.01%		10 Hz... 1kHz ± 5 Digit ³⁾ 1 kHz ... 10 kHz; ± 5 Digit / kHz ³⁾				
C / F	0...1300 ⁰ C	●	●	●	●	1 ^o C	—	2.0+3 ⁴⁾				
Peak (VAC /A AC)		●	●	●	●			3.0+300	-	-		

1) At 0°C ... + 40 °C

3) For <10 KHz ,Square wave, Bipolar inputs

2) At input ≥3.5Vrms ,Square wave, Bipolar inputs. 4) Without sensor

NP10 - DIGITAL MULTIMETER

ORDERING CODE

Digital multimeter NP10 -	X	XX	X	X
Type*:				
NP10-2		2		
NP10-3		3		
NP10-5		5		
NP10-6		6		
Version:				
standard		00		
custom-made*		XX		
Language:				
Polish			P	
English			E	
other*			X	
Acceptance tests:				
with an extra quality inspection certificate				1
with test certificate				2
acc. to customer's request				X

* see specifications page 11

** after agreeing with the manufacturer

ITEMS AVAILABLE FROM OUR STOCK:

NP10 - 300E1

version: NP10-3

NP10 - 500E1

version: NP10-5

NEW



NT10 INSULATION METER

Functions and features of the meter:

- ✓ Insulation resistance measurement up to 3 GΩ.
- ✓ Selectable test voltages 50V/100V/250V/500V/1000V.
- ✓ Measurement of DC and AC voltage in the range of 30 mV...1000 V.
- ✓ Measurement of DC and AC current in the range of 300 μA...300 mA.
- ✓ Resistance measurement 30 Ω...30 MΩ.
- ✓ Capacity measurement 30nF...30μF.
- ✓ Frequency measurement 300 Hz...100 kHz.
- ✓ Measuring the fill factor (%).
- ✓ Temperature measurement in the range of -200...800°C / Pt100/ Pt1000.

NT10 is analog digital multimeter with insulation resistance measurement, which measures VAC, VDC, VAC+DC, frequency, mA DC, mA AC+DC, resistance, continuity, diode, Farad, AC current measurement with clip-on sensor and insulation resistance measurement.

FEATURES

- Route mean square value with distorted wave form
- AC Current measurement with clip-on sensor
- Min/Max function
- Auto Power Off
- Continuity test
- AUTO and MANUAL ranging modes
- Indication of negative values on the analog scale
- Protection from dust and water
- Applicable international safety standards
- Signaling in the case of a blown fuse
- Automatic blocking socket (ABS)
- RS-232 interface
- Analog scale
- Continuous On mode
- DATA HOLD function
- NULL ZERO correction for resistance
- NULL ZERO correction for capacitance
- Diode measurement
- Display with backlit

NT10 - INSULATION METER

Reference conditions for Accuracy:

Reference temperature	23°C ± 2
Relative Humidity	45%...55% RH
Waveform of measured quantity	Sinusoidal
Input frequency	50 or 60 Hz ±2%
Battery Voltage	8 V ± 0.1 V

ORDERING CODE

Isolation meter NT10 -	XX	X	X
Version:			
standard	00		
custom-made*	XX		
Language:			
Polish		P	
English		E	
other*		X	
Acceptance tests:			
with an extra quality inspection certificate			1
with test certificate			2
acc. to customer's request			X

ITEMS AVAILABLE FROM OUR STOCK:
NT10 - 00E1

* after agreeing with the manufacturer

NEW



NC14

AC/DC POWER CLAMP-ON METER

1000 A/ 400A

- ✓ Three phase power measurement.
- ✓ AC & DC voltage measurement up to 1000 V.
- ✓ AC & DC current measurement in the range of 1000 A / 400 A.
- ✓ Inrush/peak value measurement
- ✓ Active, reactive and apparent power measurement.
- ✓ Power measurement in KM.
- ✓ Energy consumption measurement in kWh.
- ✓ Measurement up to 49th harmonics.
- ✓ Phase angle measurement.
- ✓ TRMS measurement.
- ✓ THD measurement.
- ✓ DF measurement.
- ✓ Crest factor /CF/ measurement.
- ✓ Power factor /PF/ measurement.
- ✓ Low pass filter (LPF) mode.

NC14 1000A/400A measures, calculate and displays important electrical parameters of single phase or three phase power system. It also features resistance, continuity, diode and non contact voltage detection.

FEATURES

- Unique design
- Large jaw opening
- DATA Hold function
- MIN,MAX function
- Backlit
- Non contact voltage detection
- Dual display
- Auto Power OFF
- Continuous ON mode
- Low battery indication
- Double molded cover for soft touch and firm grip of the instrument

NC14 - AC/DC POWER CLAMP-ON METER 1000 A/ 400 A

Reference conditions for Accuracy

Reference temperature	23°C ± 2°C
Relative Humidity	45%...55% RH
Input frequency	50 or 60 Hz
Power Factor	0.5L...1...0.5C
Battery Voltage	8 V ± 0.1 V

Protection from dust and water

IP20 for terminals as per EN 60529

Applicable International Safety standards

600 V CAT IV/1000V CAT III as per International Safety standard EN 61010-1

ORDERING CODE

Clamp meter NC14 -	X	XX	X	X
Maximal range of current measurement a.c./d.c.:				
400 A	1			
1000 A	2			
Version:				
standard		00		
custom-made*		XX		
Language:				
Polish			P	
English			E	
other*			X	
Acceptance tests:				
with an extra quality inspection certificate				1
with test certificate				2
acc. to customer's request				X

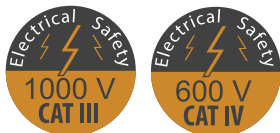
ITEMS AVAILABLE FROM OUR STOCK:

NC14 - 100E1
version: 400A

NC14 - 200E1
version: 1000A

* after agreeing with the manufacturer

NEW



NC12 AC/DC CLAMP-ON METER 1000 A/ 300 A

- Current measurement of AC & DC in the range of 1000 A / 300 A,
- Voltage measurement of AC & DC up to 1000 V,
- Voltage Measurement of DC and AC in the range of 30 mV... 1000 V,
- Measuring the resistance of 30 Ω ...30M Ω ,
- Measuring the capacity of 30 nF...30 μ F,
- Measuring the frequency of 300 Hz -100 kHz,
- Duty cycle (%) measurement,
- Temperature measurement with Pt100 and Pt1000 sensors.

NC12 measures important electrical parameters like AC current, DC current, AC voltage, and DC voltage. It also features capacitance, Ohm & continuity, frequency, and duty cycle and temperature measurement.

FEATURES

- Large jaw opening
- High accuracy for low current measurement
- User selectable backlit: (optional)
- AUTO POWER OFF
- Analog scale
- ContinuousON mode
- DATA HOLD function
- MIN,MAX function
- NULL ZERO correction for resistance
- NULL ZERO correction for capacitance
- AUTO and MANUAL ranging modes
- Diode measurement
- Protection from dust and water
- Applicable international safety standards
- Double molded cover for soft touch and firm grip of the instrument

NC12- AC/DC CLAMP-ON METER 1000 A/ 300 A

ORDERING CODE

Clamp meter NC12 -	X	XX	X	X
Maximal range of current measurement a.c./d.c.:				
300 A	1			
1000 A	2			
Version:				
standard		00		
custom-made*		XX		
Language:				
Polish			P	
English			E	
other*			X	
Acceptance tests:				
with an extra quality inspection certificate				1
with test certificate				2
acc. to customer's request				X

ITEMS AVAILABLE FROM OUR STOCK:

NC12 - 100E1
version: 300A

NC12 - 200E1
version: 1000A

* after agreeing with the manufacturer



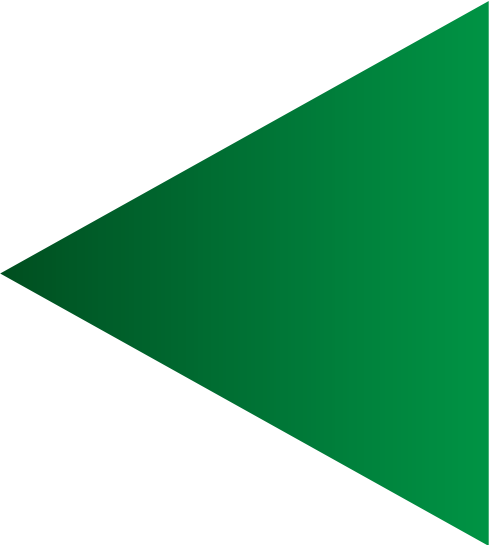
LUMEL

EVERYTHING COUNTS

We are one of leading European manufacturers of electrical devices for automation and high pressure aluminium castings. We have been on the market since 1953. We have achieved our high position on the market due to continuous development policy, competence of our employees and modern equipment for research, design and production.

LUMEL S.A. is focused on 4 main activity fields:

- production of automatic devices for measurement, conversion, control and recording, transmission and visualization of various industrial processes;
- production and machining of high pressure castings and manufacturing of moulds and tools;
- design and manufacturing of control and measuring systems,
- SMT assembly, precision engineering and production of plastics parts.



We provide comprehensive solutions for various branches of industry: power industry, chemical industry, metallurgy, food industry, light industry, automotive industry, white industry and mining.

We have been working according to: ISO 9001:2008, ISO 14001:2004 and ISO/TS 16949.



November 2016



LUMEL S.A.

ul. Sulechowska 1, 65-022 Zielona Góra, POLAND
tel.: +48 68 45 75 100, fax +48 68 45 75 508
www.lumel.com.pl

Export department:

tel.: (+48 68) 45 75 139, 45 75 233, 45 75 321, 45 75 386
fax.: (+48 68) 32 54 091
e-mail: export@lumel.com.pl